

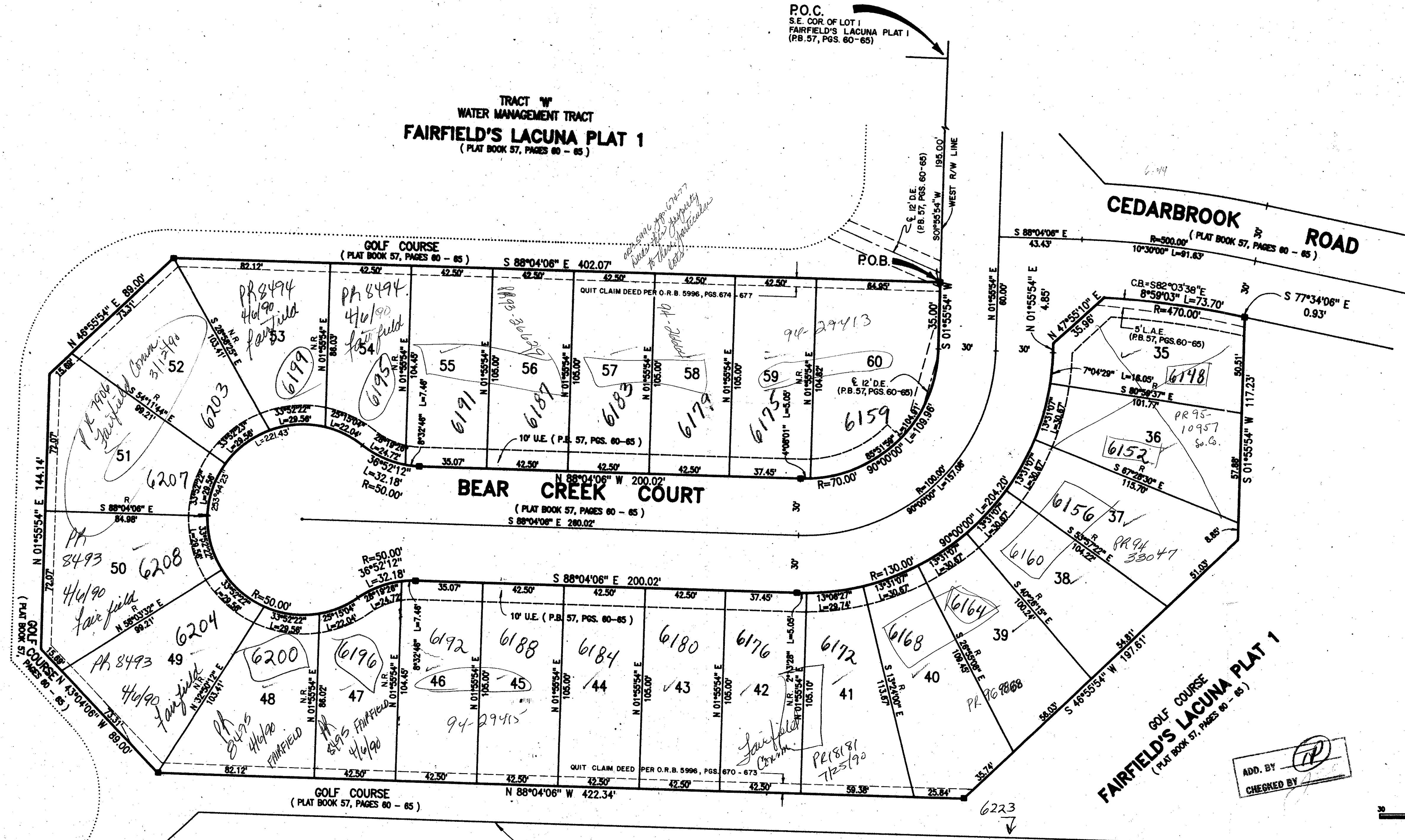
FAIRFIELD'S LACUNA PLAT 1A

BEING A REPLAT OF A PORTION OF FAIRFIELD'S LACUNA PLAT 1 AS RECORDED IN PLAT BOOK 57, PAGES 60-65, OF THE HIATUS TOWNSHIP 44 1/2 SOUTH, RANGE 42 EAST, PALM BEACH COUNTY, FLORIDA

SHEET 2 OF 2 1988

STATE OF FLORIDA
COUNTY OF PALM BEACH
This Plat was filed for record at _____
M. this _____ day of _____, 19____
and duly recorded in Plat Book No. _____
on Page _____
John B. Dumble, Clerk of the Circuit Court
By _____ D.C.

TRACT "W"
WATER MANAGEMENT TRACT
FAIRFIELD'S LACUNA PLAT 1
(PLAT BOOK 57, PAGES 60 - 65)



SUBDIVISION * Fairfield's Lacuna Plat 1A
BOOK 83
PAGE 83
FLOOD MAP #1704
ZONING RT
QUAD # 49
SEC # 23
ZIP CODE 33467
PUD NAME Balmoral CC PUD
H/747142 TAZ 74D

ADD. BY [Signature]
CHECKED BY [Signature]

GRAPHIC SCALE 1"=30'

PET. 81-233
COLLECT UNDER
PETITION
ACCO. #0001

64/83

Landmark Surveying & Mapping Inc.
1850 FOREST HILL BOULEVARD
PH. (305)433-5405 SUITE 200 W.P.B. FLORIDA

FAIRFIELD'S LACUNA PLAT 1A